

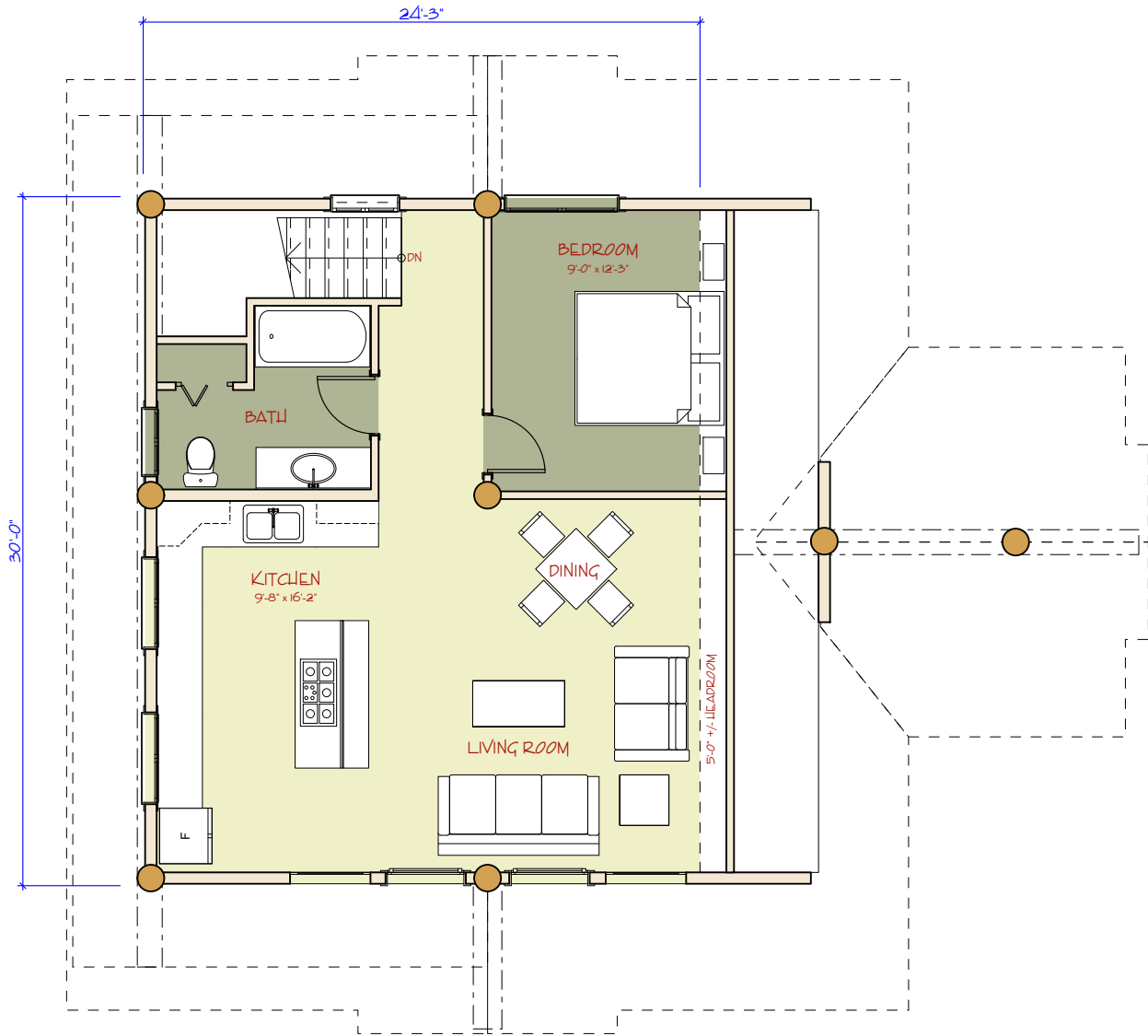
HEAD OFFICE

351 WOODSON ROAD  
 WILLIAMS LAKE, BC CANADA V2G 3P7  
 PHONE: 250-392-5577  
 FAX: 250-392-5581  
 TOLL FREE: 1-877-822-5647  
 www.pioneerloghomesofbc.com



MEADOWVIEW SUITE

GARAGE LEVEL: 900 sq ft  
 LOFT FLOOR: 665 sq ft  
 TOTAL AREA: 1,565 sq ft



## LOFT FLOOR PLAN

### HEAD OFFICE

351 HODGSON ROAD  
WILLIAMS LAKE, BC CANADA V2G 3P7  
PHONE: 250-392-5577  
FAX: 250-392-5581  
TOLL FREE: 1-877-822-5647  
[www.pioneerloghomesofbc.com](http://www.pioneerloghomesofbc.com)



### MEADOWVIEW SUITE

GARAGE LEVEL: 900 sq ft  
LOFT FLOOR: 665 sq ft  
TOTAL AREA: 1,565 sq ft