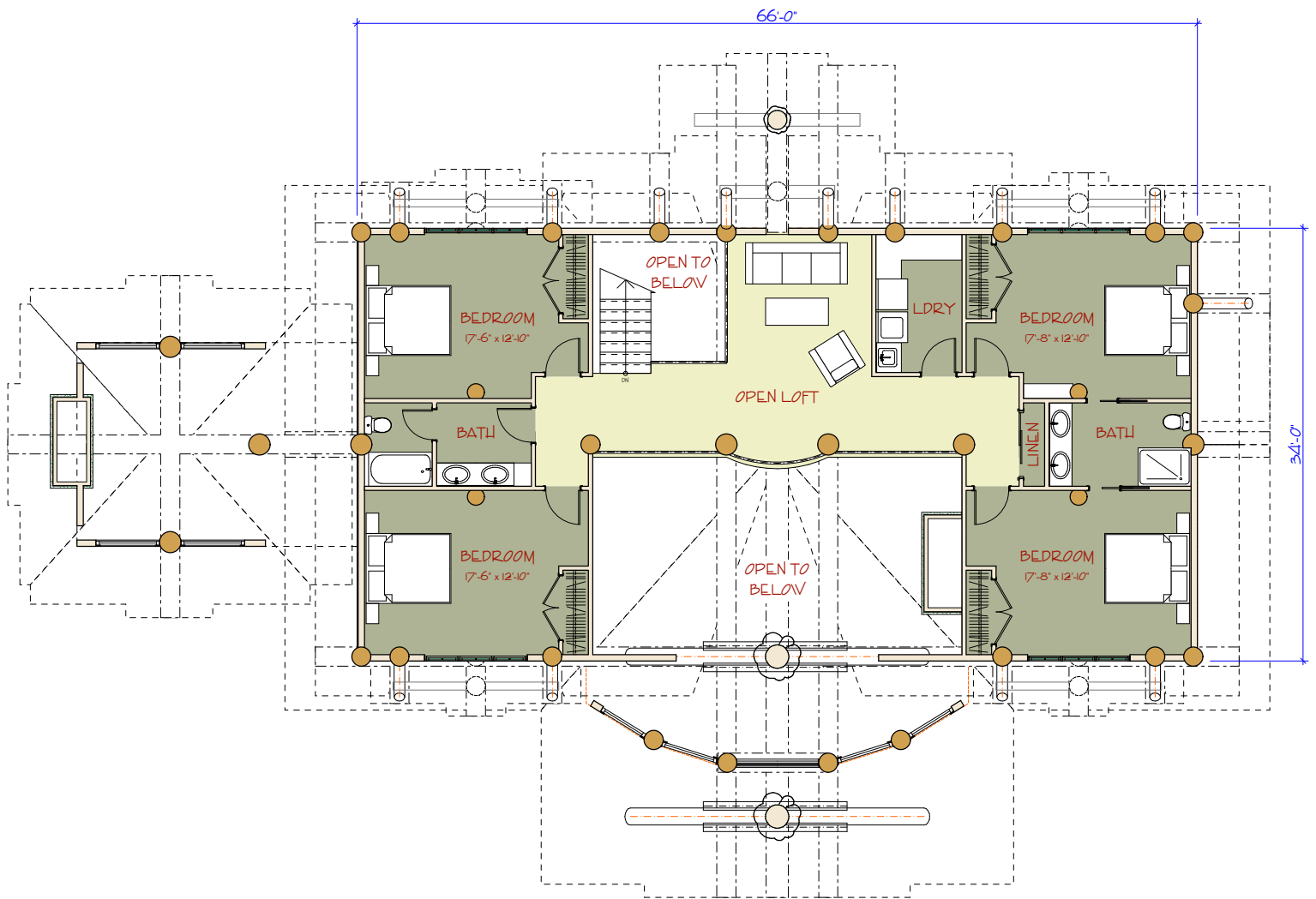


MAIN FLOOR PLAN

<p>HEAD OFFICE 351 HODGSON ROAD WILLIAMS LAKE, BC CANADA V2G 3P7 PHONE: 250-392-5577 FAX: 250-392-5581 TOLL FREE: 1-877-822-5647 www.pioneerloghomesofbc.com</p>		<p>THE LEWISVILLE FIRST FLOOR: 2,800 sq ft LOFT FLOOR: 1,667 sq ft TOTAL AREA: 4,467 sq ft</p>
--	--	--



LOFT FLOOR PLAN

HEAD OFFICE

351 HODGSON ROAD
 WILLIAMS LAKE, BC CANADA V2G 3P7
 PHONE: 250-392-5577
 FAX: 250-392-5581
 TOLL FREE: 1-877-822-5647
www.pioneerloghomesofbc.com



THE LEWISVILLE

FIRST FLOOR: 2,800 sq ft
 LOFT FLOOR: 1,667 sq ft
 TOTAL AREA: 4,467 sq ft